

## Network Appliance® SnapDrive™ Software

Simplifying storage virtualization and management.

### Key Features\*

- Simplifies management of business-critical information with advanced server-based virtualization
- Expand storage on-the-fly with no downtime
- Back up and restore data in seconds with integrated Snapshot™ technology
- Seamless support for native Cluster Managers for high availability
- Online replication of production data for business continuance

### The Challenge: Managing Expensive Enterprise Data Storage Infrastructures

In today's global marketplace, enterprises of all sizes are producing enormous amounts of business-critical information from a variety of sources—enterprise applications, corporate e-mail, data warehouses, and line-of-business applications. While trying to keep up with the explosion of digital information, companies have created cumbersome, expensive-to-maintain storage infrastructures. Now such organizations are struggling with the high costs of managing enterprise information.

### The Solution: Cost-Effective Storage Virtualization with NetApp® SnapDrive Software

With SnapDrive software from Network Appliance, you can reduce the cost and complexity of managing storage for your company by enabling flexible and efficient utilization of storage resources to improve data and application availability. SnapDrive software offers a rich set of capabilities to virtualize and enhance storage management for Microsoft® Windows® and UNIX environments. It is tightly integrated with the native file system and provides a layer of abstraction between application data and physical storage associated with that data.

### Advanced Storage Virtualization

Storage managed by SnapDrive logically appears to come from a locally attached storage subsystem. In reality, the capacity comes from a centrally managed pool of networked storage equipped with enhanced attributes. By complementing native disk and volume management with virtualization capabilities, SnapDrive allows administrators to easily create virtual disks from pools of storage that can be distributed among several storage appliances. Such server-based virtualization optimizes storage utilization and provides IT organizations the ability to respond easily to rapidly changing storage needs.

### Dynamic Volume Management

Your business does not have to stop every time your IT organization has to add more storage. With SnapDrive you add, delete, map, unmap, and mirror virtual disks online. You can expand capacity on-the-fly with no impact to application or system performance.

### Providing Business Continuance

Continual access to business-critical information is a competitive weapon in today's economy. Increased employee productivity, customer satisfaction, and company reputation hinge on the ability of your IT infrastructure to guard against data loss and ensure rapid recovery from any unforeseen disaster. SnapDrive is designed to address the needs for continual data access for applications, rapid backup, and replication for business continuance.

### Cluster Aware

For mission-critical applications where information uptime is paramount, SnapDrive provides the greatest level of reliability by seamlessly integrating with OS specific Cluster Manager. In the Microsoft Windows environment, management of cluster resources, virtual disks, and Snapshot copies is greatly simplified, making failover completely transparent. Additionally, SnapDrive enables the use of a virtual disk as a quorum device.

### SOFTWARE

Network Appliance gives you the industry's most reliable storage software solutions, optimized specifically for the job, easy to use and administer, and deliver the lowest TCO and maximum ROI.

## Back up and Restore in Seconds

SnapDrive integrates Snapshot technology to provide near-instantaneous point-in-time images of application and user data. These point-in-time images require minimal disk space and cause no disruption to service. SnapDrive enables access to Snapshot copies by mounting them as virtual disks. You can use these virtual disks for routine administrative tasks such as online backup, testing of new applications, or population of data marts with absolutely no downtime to business-critical information.

Combined with Network Appliance SnapRestore® software, SnapDrive enables restoration of data in seconds.

## Seamless Online Replication

SnapDrive, when configured with Network Appliance SnapMirror® software, enables seamless online replication, providing enterprises global data availability and protection against disasters or application failures. Your entire storage environment, including virtual disks and Snapshot copies can be mirrored to one or

more storage appliances. Continual updates of mirrors ensure that data is kept current and available. The online replication technology performs intelligent resynchronization of data modified during application testing or when recovering from a broken mirror.

## Lowering Your Cost of Ownership

The rich set of innovative capabilities offered by SnapDrive directly translates to significant economic benefits to IT organizations. SnapDrive simplifies storage management and maximizes asset utilization, thereby enabling a more versatile and responsive IT infrastructure.

## Intuitive Management

In the Windows environment, SnapDrive allows administration via the Microsoft Management Console or a command line, making management simple and intuitive. Interactive wizards and easy-to-use interfaces guide administrators through all management tasks and create automatic schedules of operations. In the UNIX environment, SnapDrive comes with an intuitive command line for script based automation.

## Enhancing Enterprise Solutions

The flexible storage management infrastructure enabled by SnapDrive dramatically improves the availability and responsiveness of enterprise applications to changing business needs. SnapDrive is ideally suited to mission-critical database and messaging applications.

## Software and Platforms Supported\*\*:

- Data ONTAP™ 6.3 and later
- Windows 2000 and 2003
- Solaris 8 and 9
- HP-UX 11i and 11i v1.6
- AIX 5.1 and 5.2

## Unleash the Power of Information

See how NetApp SnapDrive can bring reduced costs to your enterprise network. Visit our Web site at [www.netapp.com](http://www.netapp.com). Let us show you what the evolution of storage means for your business.

\* Features and functionality vary for the various Operating Systems supported. Please refer to the latest OS specific Administrative Guide for the exact capabilities.

\*\* For detailed system requirements, please refer to the system requirements section for SnapDrive on <http://now.netapp.com>.

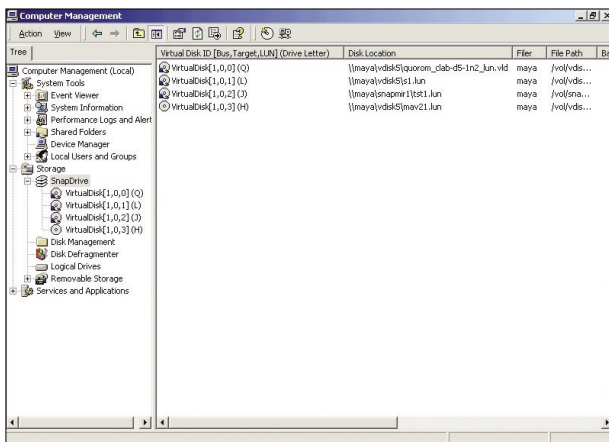


Figure 1) SnapDrive Storage Management

Seamless integration with native Microsoft Windows tools makes management intuitive and easy in the Windows environment.

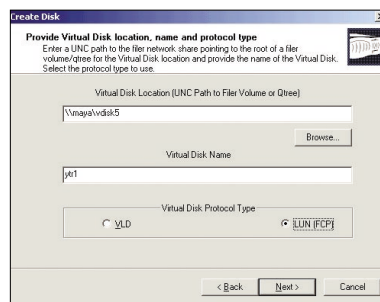


Figure 2) Creating Virtual Disk

With just a few clicks of a button, you can create virtual disks with multiple terabytes of capacity.



**Network Appliance, Inc.**  
495 East Java Drive  
Sunnyvale, CA 94089  
[www.netapp.com](http://www.netapp.com)

© 2004 Network Appliance, Inc. All rights reserved. Specifications subject to change without notice. NetApp, the Network Appliance logo, DataFabric, FilerView, NetCache, NearStore, SnapManager, SnapMirror, and SnapRestore are registered trademarks and Network Appliance, ApplianceWatch, ContentDirector, Data ONTAP, gFiler, MultiStore, NOW, SnapDrive, SnapLock, SnapMover, Snapshot, SnapVault, SyncMirror, The evolution of storage, VFM, and Virtual File Manager are trademarks of Network Appliance, Inc. in the U.S. and other countries. UNIX is a registered trademark of The Open Group. Solaris is a trademark of Sun Microsystems, Inc. Oracle8i and Oracle9i are trademarks of Oracle Corporation. Microsoft and Windows are registered trademarks of Microsoft Corporation. All other brands or products are trademarks or registered trademarks of their respective holders and should be treated as such. DS-2400-0804